

Job No.:

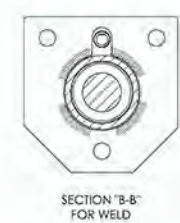
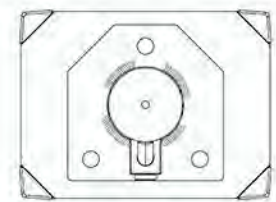
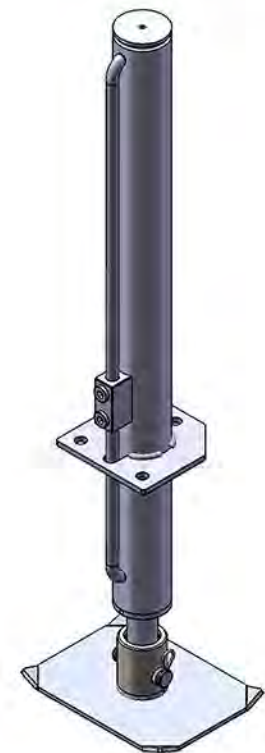
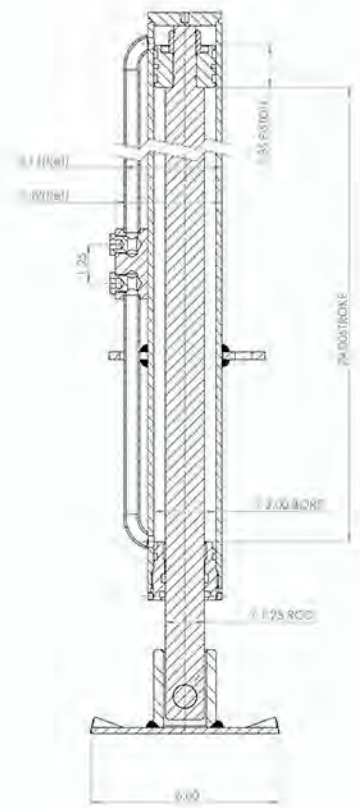
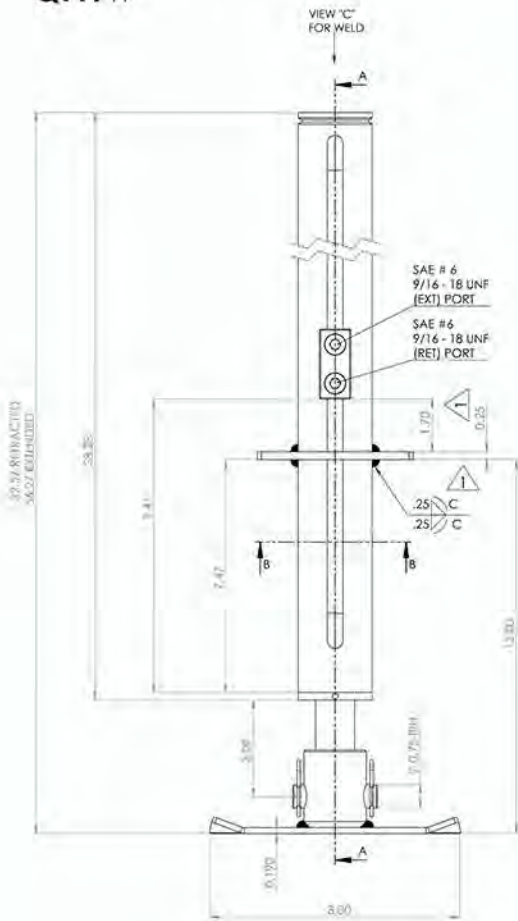
QTY: 11

Approval Signature

Print Name

Date

ATTENTION CUSTOMER: Stillwell Jacks can only guarantee the cylinder details in this drawing to be right and correct for your needs based on your original input AND your feedback from a detailed review of the Bailey International LLC design quote. This drawing and all details need to be reviewed by you, the customer. When you are satisfied that the cylinder will meet your needs of form, fit and function, please complete the information above, giving your approval to Bailey to build the cylinder as drawn. Return the completed form to your Stillwell Jacks representative for processing.



Note:

1) TORQUE BOLT TO 225 FT-LBS

XXXXX SPECIFICATIONS AND MACHINE NOTES: XXXXX

Rod M/L:	Tube C/L: 27.757	Rod C/L: 31.762
	Tube F/L: 27.726	Rod F/L: 31.70
Working Pressure (psi):	Stem No.:	Custom
A Test Pressure (psi):	Tube No.:	430-2.0-01
Max Pull Load (lbf): lbs @ psi	Base Drill:	Ø 0.375 @ 0.688 C/L
Max Push Load (lbf): lbs @ psi	Gland Drill:	Ø 0.375 @ 1.625 C/L

Tolerances  
 DIMENSIONS ARE IN INCHES  
 ANGULAR: MACH: 2°  
 X.X: 0.1  
 X.XX: 0.02  
 X.XXX: 0.005  
 NON-MACHINED SURFACES: .060  
 BURNOUT SURFACES: .120

Wgt. (lbs)  
 Paint: Black  
 Date: Initial

Stillwell Part #  
 Customer Name  
 Customer Part #

7K Atlas  
 XXXXX

Yellow Sheet  
 GKG Proto

Quoted  
 Detailed  
 App.

CHE  
 GKG



Stillwell Jacks  
 10824 Nesbitt Ave S  
 Bloomington MN, 55437

THE INFORMATION CONTAINED IN THIS DRAWING IS THE SOLE PROPERTY OF STILLWELL JACKS. ANY REPRODUCTION IN PART OR AS A WHOLE WITHOUT THE WRITTEN PERMISSION OF STILLWELL JACKS IS PROHIBITED.

Rev Loc Date

Comments

Initial

Rev. 1